



## ALPANA

Let your Data turn into Insights and put the power into your hands to take Data driven decisions. Alpana Platform provides real-time access to your data and lets users analyze complex informations through graphical representations that are easy to understand.

### Alpana Designer

Drag and drop widgets into the interface and manipulate your data right away. The desktop application allows you full autonomy. Once the Dashboard ready, share with your colleagues through Alpana Server and start to collaborate.

### Alpana Server

Securely share your Dashboards and Widgets to any modern web browser. Dashboards can be embedded in your Scada Application, your intranet or presented through our secured Server.

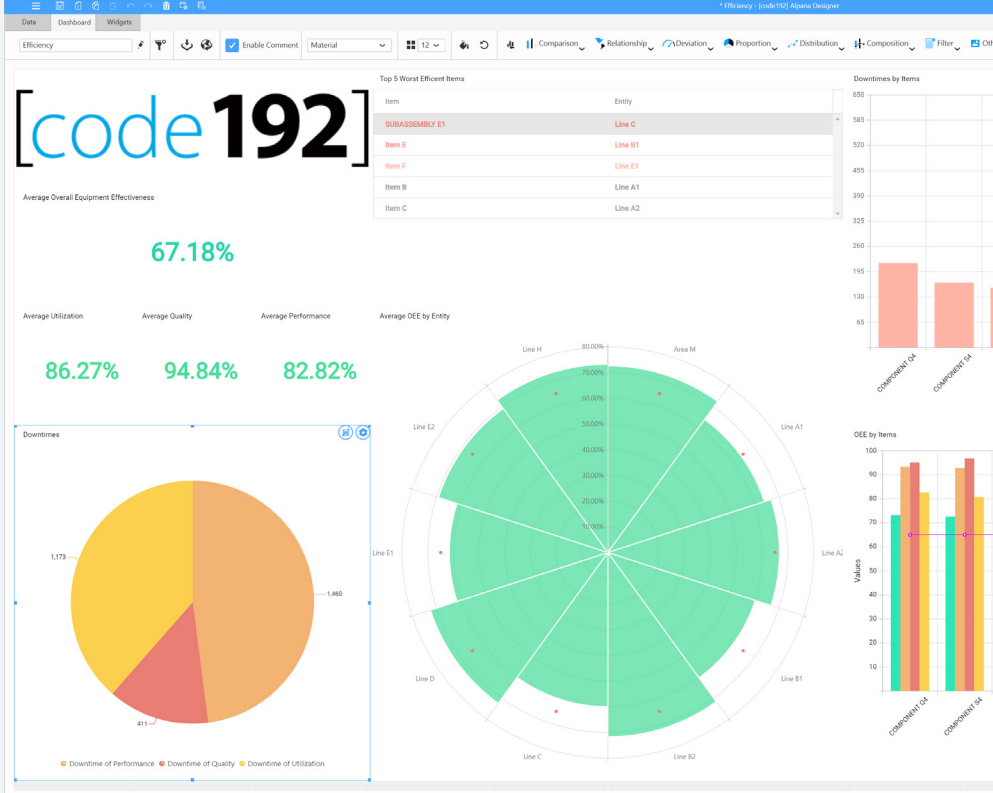
### Meant For Aveva - Schneider Electric

Alpana Platform is an end-to-end solution for creating and sharing interactive industrial Dashboards. It is meant for Aveva - Schneider Electric Software with native connectors to their software portfolio.



# ALPANA DESIGNER

The Alpana Designer application lets you connect to data and visualize them as interactive Dashboards using a rich widget library. Alpana Designer then allows you to publish the composed Dashboard to your Alpana Server and share it with your team.



## KEY FEATURES

### Data Connectivity

- Wonderware Intelligence
- Wonderware Historian
- Excel, CSV
- SQL Server
- RESTful web data connector

### Widgets

- A huge number of Chart types that can be used in any combination and with many NEW options :
  - NEW Step Line, NEW Step Area,
  - NEW Range Area,
  - Line, Area, Stacked Area, NEW 100% Stacked Area,
  - Spline, NEW Spline Area, NEW Stacked Spline Area, NEW 100% Stacked Spline Area,
  - Column, NEW Range Column, Stacked Column, 100% Stacked Column,
  - Bar, Stacked Bar, 100% Stacked Bar,
  - NEW Hi/Lo, NEW Hi/Lo NEW Open/Close, NEW Candle, NEW Waterfall
- NEW Radial Charts : Polar, Radar
- Proportion Charts with NEW shapes and NEW options : NEW Semi-Pie, NEW Semi-Doughnut, Pie, Doughnut, Pyramid, Funnel
- Gauge with NEW options : needle, threshold, ...
- ... and all your favorite widgets from Alpana v2.0 improved with more configurability : Grid, Choropleth Map, Bubble Map, Card, RadioButton, DatePicker, Combobox, CheckBox, RangeNavigator, Label, Image

### NEW Layout and Theme Management

- Configure the layout grid for finer placement
- Create scrolling Dashboards with many pages
- Choose theme, use background image, transparent widgets

### System Requirements

#### Hardware

- Processor - Dual Core 32-bit CPU (x86)
- Hard Disk - 2 GB (to install and run)
- RAM - 4 GB (minimum)

#### Software

- Operating System - Windows 7, 8+, Server 2012+
- Microsoft .Net Framework 4.7
- IIS Express
- Browser - IE 9+, Edge, Firefox 22+, Chrome 17+, Opera 12+, Safari 5+

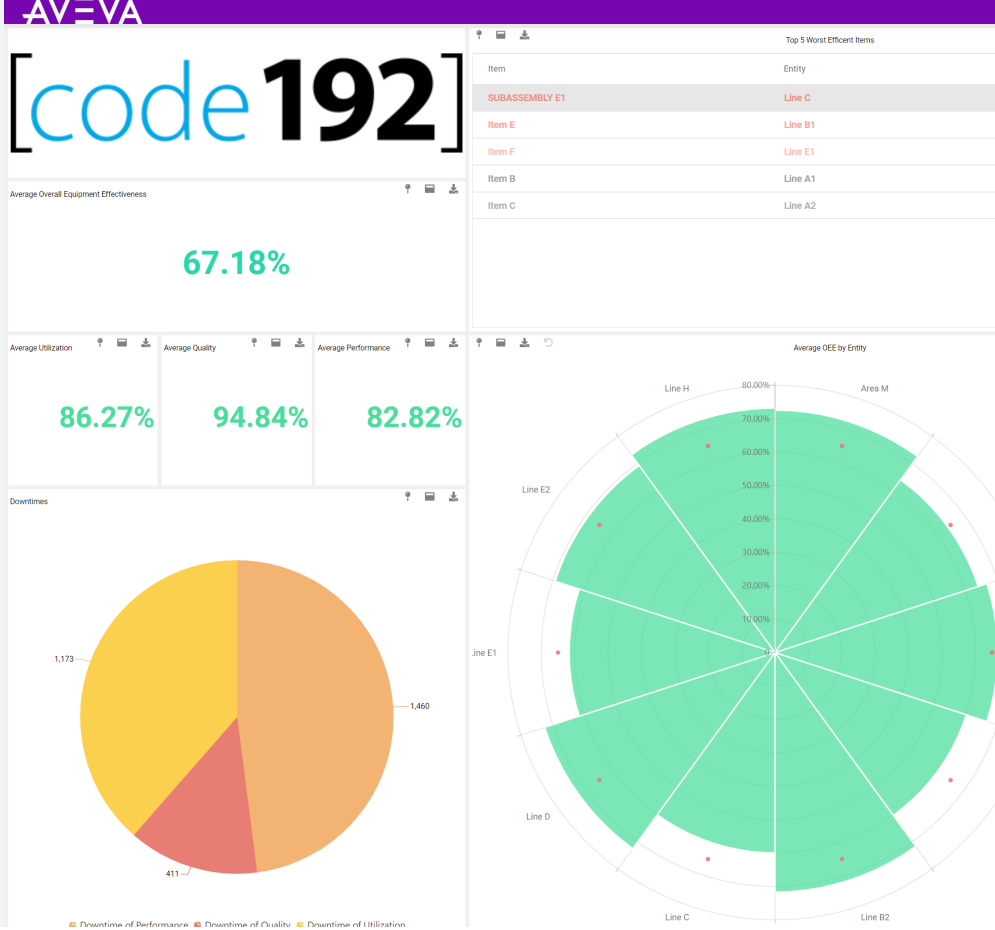
### Licensing

The Alpana Designer is not subject to a paid license. It can be installed on all PCs within your organization.



# ALPANA SERVER

The Alpana Server lets you efficiently organize and share Dashboards through a web interface. Installed on premise or in the cloud, Alpana Server can host multiple tenants in complete isolation. Use our NEW API to talk to Dashboards live. Embed Dashboards within your application either as web pages, or directly within Wonderware Intouch with our native container.



## KEY FEATURES

### NEW API

- Send data continuously and let widgets update seamlessly. Example : Connect OPC, Wonderware System Platform and more to Dashboards and get live updates for targeted users.
- Event-based Dashboard refresh
- Trigger exports from outside Alpana and distribute the results
- Send data to embedded Dashboards to filter from your application's context
- Let users click in an embedded Dashboard, and receive the context into an other application

### NEW Multi-tenancy

Manage multiple isolated tenants from a single installation. Save on maintenance and deployment costs with multi-customer installations.

### Dashboard management

Dashboards are organized in a folder structure of any depth. Permission to view the Dashboards can be given to specific users or groups.

### Designer integration

Seamlessly design and publish Dashboards from within the designer application.

### Versioning

All items stored in the Dashboard server are versioned.

### User management

Concurrent users can easily be organized and grouped. They can be created within the Server, but also Facebook, OpenID, Google, ADFS or Microsoft security

### Scheduling / Alerts

Dashboards can be exported into an image / PDF / Excel file and emailed according to a flexible schedule. Or on complex data change conditions.

### Autorefresh

Dashboards can refresh by themselves based on a timer.

### Collaboration

Users can post comments on Dashboards or Widgets, with notification. NEW chat feature

### And much more ...

RGPD support, CORS whitelisting, WorldClass support, training and documentation, Android/iOS mobile app, Intouch OMI app ....